



Changing The World of Storage

T50 Automated Tape Library



SPECTRALOGIC.COM

The Spectra® T50 Library

The Spectra T50 tape library simplifies data backup with features that save time, reduce risk, and lower cost. The T50 offers the most advanced LTO technology, a suite of powerful features, and integrated BlueScale® Encryption and key management.

The Spectra T50 library is built on multiple generations of Spectra Logic hardware and software technology. The field-proven BlueScale 10 user interface and feature set is common to the T50, T120, T950 and future Spectra libraries.



Unmatched ease of use

The T50 provides unmatched ease of use, with time-saving simplified media handling. The T50 library also scales easily: in performance by adding drives and in capacity through five-slot increment upgrades that users can install. The T50's graphical interface is intuitive to navigate, and is available through the color touch screen and remotely through a web browser, which lets you track and manage data from anywhere. The T50's feature set and user interface is the same used across the T120 and T950 libraries, making it easy to move up to a larger library as your data grows.

With Spectra Certified Media, it's quick and easy to add tapes to your library. The tapes arrive already unwrapped and bar-coded, in protective cases. Certified Media offers a wide range of unique benefits such as guaranteed unique barcodes, overnight shipment when media is needed right away, reporting on media health and full integration with BlueScale Encryption and key management. With the media lifetime guarantee and advanced features, you can count on a superior return on your media investment.



Make connections easily

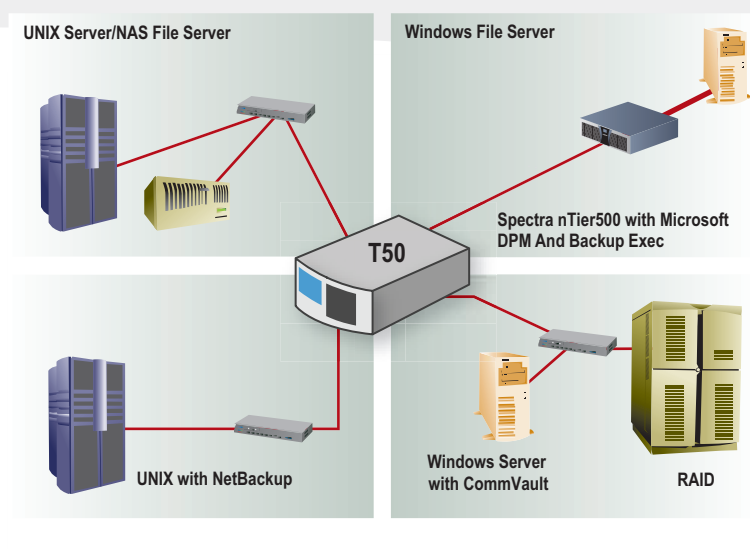
The T50 can be quickly and affordably added to virtually any environment. The T50 is compatible with every interface and major networking protocol, including Fibre Channel, SCSI, and iSCSI — letting you take advantage of high performance across your network and your backups.

The T50 also works with every major operating system, including Windows, Linux, UNIX and Mac. You won't have to worry about which backup application to use either, since it works with all major applications such as Backup Exec, NetBackup, NetVault, and more. The T50 can even be

shared with multiple servers and applications, so that to the outside environment, one T50 looks like multiple libraries, allowing sites using two backup applications to use just one T50. By configuring the library with partitions using Shared Library Services (SLS) you can quickly configure the T50 to seamlessly work with both applications.

The T50 also connects effortlessly to disk, including Spectra nTier backup and archive servers. This lets you easily take advantage of disk's speed along with tape's reliability.

Using multiple partitions through integrated Shared Library Services (SLS), one library can simultaneously connect to multiple operating systems, backup software packages and network interface options.



Encrypt data while backing it up

The T50 supports AES 256-bit encryption through its LTO-4 drives, letting you easily encrypt and back up data in a single step. Encryption eliminates the legal and operational risks of losing backed up data. Disposing of data, as required by law and regulatory agencies, is also easy with encrypted data: delete the key, and the data is considered erased.

Creating and managing encryption keys is easy using the T50's graphical BlueScale interface. BlueScale key management is integrated with the other library management features, letting you introduce encryption into your backup strategy in just a few steps, all with no external hardware or software required.

BlueScale Encryption and Key Management is available in a Standard Edition and Professional Edition.

- The free Standard Edition supports one key at a time, and works well for organizations that require easily implemented encryption to secure off-site data.
- The Professional Edition offers a wide range of security options for organizations that manage data sets with multiple encryption requirements and multiple levels of security. Professional Edition also supports more extended and complex data encryption policies.

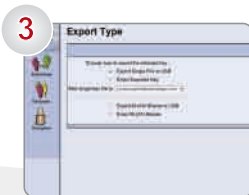
START ENCRYPTING YOUR DATA IN FOUR EASY STEPS



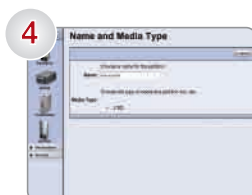
Step 1: Create an encryption user



Step 2: Create an encryption key



Step 3: Export the key for safe keeping

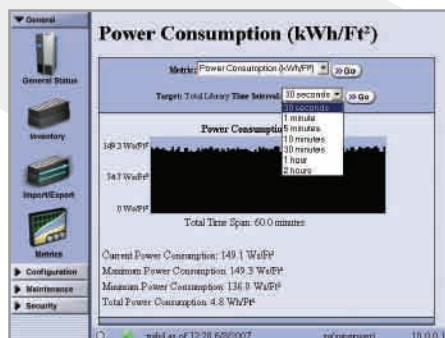


Step 4: Create a partition for encryption

Spectra BlueScale Encryption provides a complete key management system that eases the management of encrypted data, making secure data backup practical, affordable and easy to implement.

Go Green!

Spectra libraries simply use less power. Our products are designed right, with power efficiency built-in. Keep an eye on the power use by taking advantage of the library's power monitoring feature. Armed with this information, you can effectively manage your data center's power usage to suit your needs-and that's good for business and the environment.



Top ten reasons why the Spectra T50 is the best library for you:

1. Integrated encryption solution with no additional hardware, servers, or applications required
2. Encryption key management integrated into library
3. Management interface available through color touchscreen, and remotely using a Web browser, so you can manage from anywhere in the world
4. The most connectivity options: iSCSI, Fibre Channel, and SCSI
5. 24/7 support around-the-world
6. Up to 80 TB in 4U
7. Fully compatible with major backup, archival and HSM packages
8. Support for integrated partitioning with SLS, so one library can be connected to up to 4 different backup servers
9. Most scalable – five-slot increments, and up to fifty slots; up to four half-height LTO drives
10. Best investment protection—easily expand or trade-up

Physical Characteristics	
Dimensions	
Desktop or Rack Height: 4U	
HxWxD inches: 7 x 17.5 x 29	
HxWxD cm: 17.78 x 44.5 x 73.7	
Reliability: MCBF > 500,000	
Weight: 40 lbs 18kg	
Power: 265 watts 120/240 volts	

Throughput				
Drives	Native (MB/s)	Native (GB/hour)	Compressed (MB/s)	Compressed (GB/hour)
LTO-4 Full height				
1	120	432	240	864
2	240	864	480	1728
LTO-3 Full height				
1	80	288	160	576
2	160	575	320	1152
LTO-2 Half height				
1	24	86	48	172
2	48	172	96	345
3	72	259	144	518
4	96	345	192	691

Capacity (Native/Compressed)			
Capacity	LTO-4 Full height	LTO-3 Full height	LTO-2 Half height
Min slots 10	8/16TB	4/8 TB	2/4 TB
Max slots 50	40/80TB	20/40 TB	10/20 TB

Supported By All Major Backup Applications			
BakBone	Xendata	Legato	Microsoft
CommVault	EMC	Masstech	Syncsort
Computer Associates	IBM TSM	Front Porch	Symantec
Works with all major operating systems including Windows, UNIX, Mac, Linux			

Guaranteed Support Choices
<ul style="list-style-type: none"> • 24-hour telephone • assisted self-maintenance (ASM) • next business day • same business day • worldwide 4-hour on-site

Upgrade Capacity and Performance
<ul style="list-style-type: none"> • 10-50 slots • 1-4 half-height LTO drives • 1-2 full-height LTO drives • Up to four partitions

Connectivity
<ul style="list-style-type: none"> • SCSI • Fibre Channel • iSCSI



Spectra T950

Spectra T120

The T50 provides investment protection, allowing you to seamlessly expand to a larger library—which will have the same interface, but more capacity, power, and features.

About Spectra Logic Corporation

Spectra Logic is the leading innovator in data archive and backup. We help customers all over the world protect data with power-efficient products that let users reduce risk, lower cost and save time. Spectra Logic's archive and backup products are designed specifically for secondary storage needs and are compatible with every major tape and disk format. Spectra products provide integrated encryption and key management options through the intuitive BlueScale 10 interface. The company's tape, disk and encryption solutions are designed to evolve over time and are an excellent investment for IT managers who project growth and plan for years into the future.

Since Spectra Logic was founded in 1979, the company has introduced innovative, industry-leading products including: Archive and Backup Servers (nTier-2007); hardware-based, VTL encryption with compression (RXT-2006); hardware-based, library-enabled encryption with compression (BlueScale Encryption-2005); and integrated tape and disk in a single library (Spectra T950 with RXT-2004). Spectra Logic is changing the world of storage.



Spectra Logic 1700 North 55th St. Boulder, CO 80301	303.449.6400 800.833.1132 Fax 303.939.8844	Spectra Logic Europe Magdalen Centre Robert Robinson Avenue The Oxford Science Park, OXFORD UK-OX4 4GA	+44 (0) 870 112 2150 Fax +44 (0) 870 112 2175
---	--	--	--

Spectra Logic® and the Spectra Logic logo are registered trademarks of Spectra Logic Corporation. All rights reserved worldwide. All other trademarks and registered trademarks are the property of their respective owners. Specifications are subject to change without notice. Please contact Spectra Logic for availability of specific configurations and technologies.