

DSView[®] 3 Management Software



Secure, Centralized Data Center Management

DSView[®] 3 management software by Avocent provides secure, centralized management of all connected IT and network devices. When used in conjunction with any DS Series, MergePoint[™] or Cyclades[®]-branded products, DSView 3 software allows IT administrators to remotely access, monitor and control target devices on multiple platforms at numerous locations – anywhere, anytime.

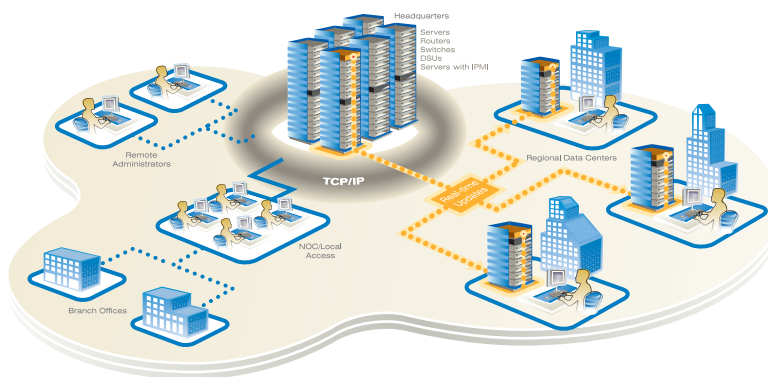
A unique feature of DSView 3 software is its “hub and spoke” architecture – a fully redundant, replicating database creates a complete backup/failover solution. You benefit through the automation of routine tasks, event alerts and easy navigation between multiple IT devices. You can configure, manage, upgrade and backup any IT device – all from a single, secure Web-based user interface.

Use the DSView 3 Virtual Media feature to remotely transfer local data to and from remote servers and eliminate costly and time-consuming site visits. You can conduct tasks across heterogeneous platforms regardless of the operating system, install or patch applications, perform diagnostic testing, and even reboot remote servers – all from your desktop.

Additional features include selectable encryption modes, multiple authentication support, exit macros, detailed event log management for security and auditing, and third party power support.

While DSView 3 software acts as a central management and access point for out-of-band connections, it also integrates other Avocent and third party solutions. The benefits to you include:

- Environmental monitoring through Uptime Devices to monitor temperature, humidity and other variables in the data center
- NetClarity Auditor Plug-in provides server vulnerability assessment and remediation
- LANDesk[®] Server Manager delivers server systems and life cycle management
- DSView 3 Mobile software provides access from handheld devices
- DSView 3 Connector for HP OpenView software allows out-of-band access and power control for HP software.



Applications

- Secure, centralized data center management
- Intelligent Platform Management Interface (IPMI)
- Data logging/archiving for regulatory and audit compliance
- Audited change management
- Automated infrastructure management with SSH pass-through feature
- ISDN support
- Secure, remote access for server provisioning
- Central management of multiple auditor devices
- Environmental monitoring
- Mobile integration
- Server management capabilities
- Remote problem resolution

Benefits

- Hub and spoke architecture for redundancy and real-time updates
- Consolidated user interface for centralized management
- Support for embedded server management technologies from multiple server manufacturers
- IPMI-enabled server access
- Exit macros for secure user access
- User authentication through internal or external services such as LDAP, Active Directory, NT Domain, TACACS+, RADIUS and RSA SecurID
- Access to remote sites when the network is down using high-speed ISDN connections
- Complete systems management of servers from bare metal provisioning through end of life cycle
- Standard provisioning templates to automate consistent deployment of servers
- Centralized health and security information to keep servers secure and available
- Promotes proactive physical infrastructure management
- Remote management of Windows servers from hand-held devices for operational efficiency

Specifications

DSView 3 server

DSView 3 server
Microsoft® Windows® 2000 Server or Windows 2000 Advanced Server with the latest service package
Microsoft Windows Server® 2003 Standard, Enterprise and Web Edition
Microsoft Windows XP Professional with Service Pack 2, or later, Windows Vista™
Red Hat® Enterprise Linux, version 5 or 4 (AS, ES and WS products)
Sun® Solaris™ SPARC 9 and 10
Novell® SUSE® Linux (x86) Enterprise Server 8 and 9
VMware Virtual Server

DSView 3 software (hub/spoke) minimum requirements

For supported Windows and Linux systems: 2 GHz Pentium or equivalent processor
For supported Solaris systems: 1 GHz UltraSpare III processor
1 GB RAM – additional memory may be needed depending on the number of plug-ins installed and appliances supported
100BT NIC (1 GB LAN recommended)
10 GB of free disk space – additional disk space may be required for data logging and plug-ins
One of the following operating systems:
• Microsoft Windows 2000 Server or Windows 2000 Advanced Server with the latest service pack
• Microsoft Windows Server 2003 Standard, Enterprise and Web Edition
• Windows XP Professional with Service Pack 2 or later
• Windows 2003 Server Standard, Enterprise or Web Edition
• Windows Vista
• Red Hat Enterprise Linux, version 5 or 4 (AS, ES and WS products)
• Sun Solaris SPARC 9 and 10
• Novell SUSE Linux (x86) Enterprise Server 8 and 9

Browser support

Microsoft Internet Explorer version 6.0 SP1 and later (Windows operating systems only)
Mozilla version 1.7.3 and later
Mozilla Firefox® version 1.0 and later (Windows and Mac®)
Netscape® version 7.2. and later

Avocent managed appliance support

Console management appliances
CPS810 and 1610 serial over IP network appliances
All CCM console management appliances
Cyclades ACS advanced console server

Digital switches

DS1800 digital switches
DSR® switch models: 800, 1010, 1020,* 1021,* 1022,* 1024,* 1030,* 1051,* 1161, 2010, 2020,* 2050,* 2055,* 2161, 4010, 4020,* 4050,* 4160, 8020,* 8050,* 8055*
**These models contain a modem port for use with the DSR switch remote operations software.*
Cyclades KVM/net KVM over IP switch
Cyclades KVM/netPlus KVM over IP switch

Service processor managers

MergePoint 5200 series of service processor managers

Generic appliances

Data center devices such as UPS, HVAC and environmental monitoring devices may be managed with DSView 3 software by launching a standard Web browser to the device URL or opening a Telnet session.

Supported modems

The following modems and serial PCI cards are supported by the DSView 3 software, provided the modems are supported on the DSView 3 server operating system.
• Perle PCI-RAS 4 and PCI-RAS 8, which are backwards compatible with Perle V90 Modem
• Equinox SST MM 4p Modem
• Equinox SST 4p Serial
• Eicon DS series ISDN BRI-2M
• Eicon DS series ISDN 4BRI-8M
DSView 3 software also supports the USR3453B - Courier 56k external modem.
NOTE: The modems listed are not supported on Sun Solaris SPARC operating systems.

Power devices

Power devices are supported on CPS and CCM appliances and on all DSR switches that contain one or more SPC ports.

- Avocent SPC power control devices
- Server Technologies Sentry Switched CDU CW-8H1, CW-8H2, CW-16V1, CW-16V2, CW-24V2, CW-24V5, CW-32VD1 AND CW-32VD2 (supported models may change; contact Avocent Technical Support for current information)*
- Cyclades PM8i-10A, Cyclades PM10-15A, Cyclades PM10-20A, Cyclades PM10-L20A, Cyclades PM10-L30A, Cyclades PM10i-10A, Cyclades PM10i-15A, Cyclades PM10i-16A, Cyclades PM10i-20A, Cyclades PM10i-L30A, Cyclades PM10i-32A, Cyclades PM10i-32Au, Cyclades PM20-20A, Cyclades PM20-L20A, Cyclades PM20-L30A, Cyclades PM20i-16A, Cyclades PM20i-20A, Cyclades PM20i-30A, Cyclades PM20i-30Au, Cyclades PM20i-L30A, Cyclades PM20i-32A, Cyclades PM20i-32Au

*CPS appliances do not support.

Features

Data Center Management

- Support for embedded server management technologies (HP® iLO, Dell® DRAC 4, IBM® RSA II, NEC IPF), IPMI, MergePoint appliances and Cyclades-branded appliances
- Multiplatform support for centralized management
- Detailed audit logs and reporting
- Email event notification and SNMP traps for defined system events
- Scheduling of routine tasks, updates and file loading, including automation of task schedules and updates
- ISDN support for remote access when the network is down
- Single Flash upgrade
- Single appliance browser

Security

- Failover authentication
- Redundancy for user access and authentication provided by hub and spoke architecture
- Virtual Media
- Selectable encryption modes
- Authentication against existing authentication services (LDAP, Active Directory, NT Domain, RADIUS, TACACS+ and RSA SecurID)
- User logs and access control
- Log event management
- Video encryption
- Exit macros

User Interface

- Single, secure browser-based interface with customized usability features, including keyboard pass-through, scaling, custom viewer toolbar and built-in search filter
- Multi-browser support (Internet Explorer, Firefox, Netscape and Mozilla)
- Virtual Media support for remote diagnostic testing and software loading
- Scalable video sessions

Plug-in Support

LANDesk Server Manager

- Complete systems management for servers from bare metal provisioning through the life cycle
- Provides key server health and performance metrics
- Single sign-on

DSView 3 Mobile software

- Connectivity through handheld devices
- Remote Management

DSView 3 Connector for HP Software

- Out-of-band and power management for HP Software

Uptime Devices

- Environmental monitoring
- Proactive physical infrastructure management

NetClarity Auditor

- Vulnerability discovery
- Remediation capabilities



Corporate Headquarters
4991 Corporate Drive, Huntsville, AL 35805
TEL 866.277.1924 FAX 256.430.4030
www.avocent.com

Avocent, the Avocent logo, The Power of Being There, Cyclades, DSR, DSView, LANDesk and MergePoint are trademarks or registered trademarks of Avocent Corporation or its affiliates. All other marks are the property of their respective owners.

Copyright © 2007. Avocent Corporation. All rights reserved.

0607-DSV-DS